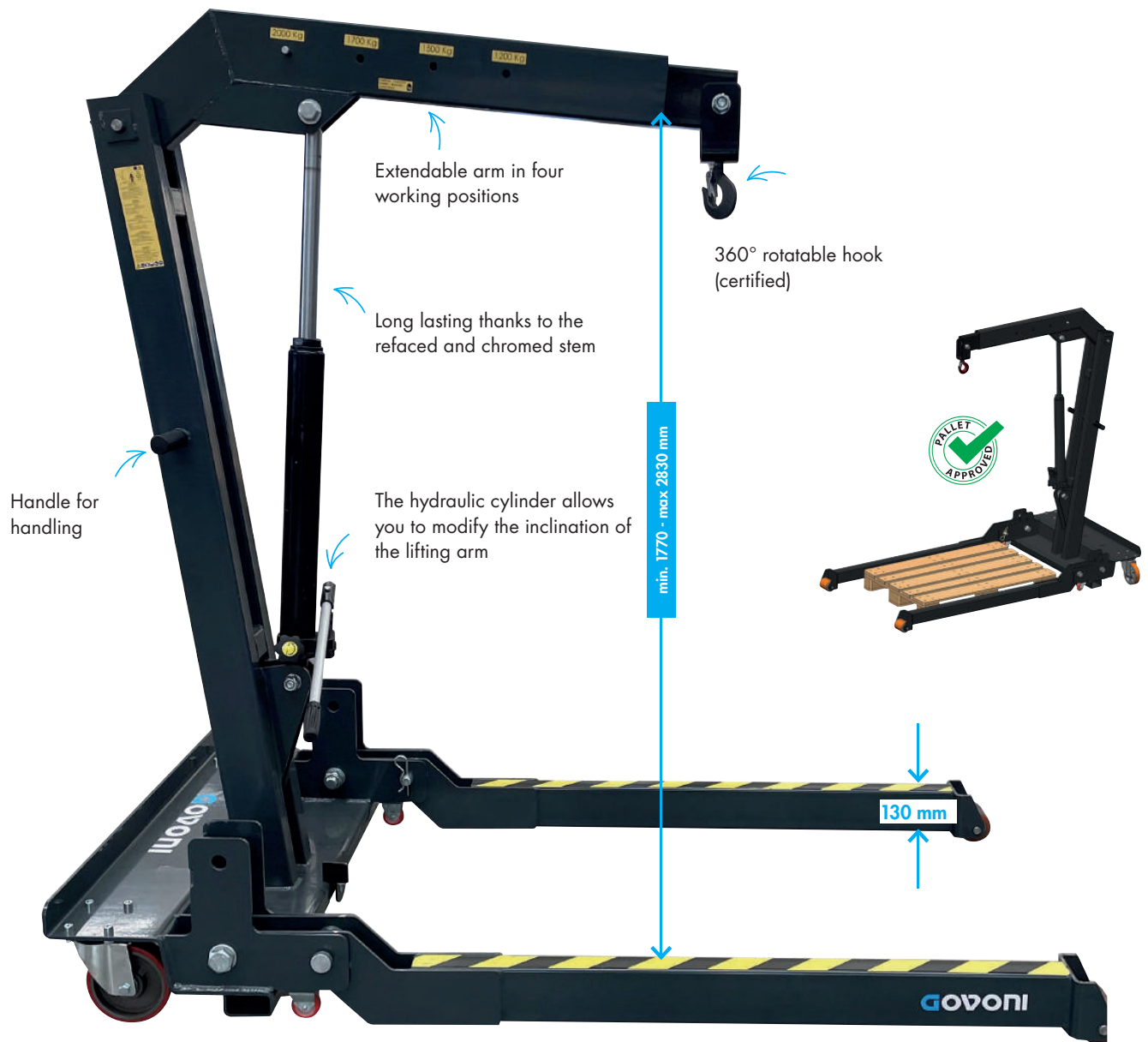


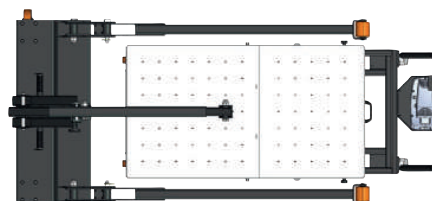


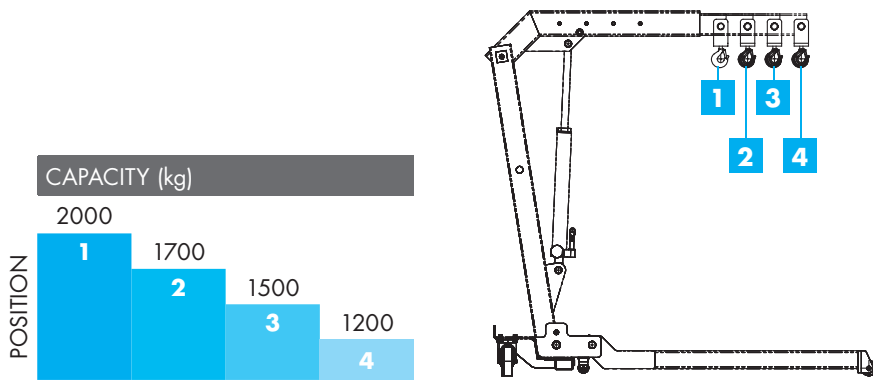
HYDRAULIC FOLDING CRANE USED FOR LIFTING MECHANICAL COMPONENTS UP TO 2000 KG



GO CODE **1620PRO**

1 with 1 pcs. 232 kg





THE CRANE CAN BE USED IN 4 LOADING CONFIGURATIONS, BASED ON THE EXTENSION OF THE LOADING ARM.



FOLDS IN A FEW SECONDS, TAKES UP VERY LITTLE SPACE WHEN REPOSITIONING



A	B	C	D	E	F	G	H	I	L
740	627	514	401	140	760	910	1060	1210	1770
M	N	O	P	Q	R	S	T	U	
2534	2632	2731	2830	1960	625	1110	863	2138	



SWIVEL REAR WHEELS FOR MAXIMUM HANDLING

