

DIAGNOSTICS

● jaltest OHW

CATALOGUE

CV

AGV

OHW

MHE

marine

ISOBUS

TOOLS

● jaltest
BYCOJALI



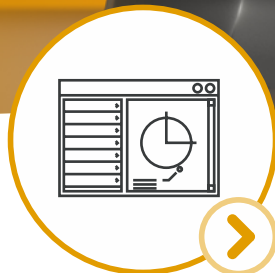
● jaltest OHV



JALTEST
DIAGNOSTICS



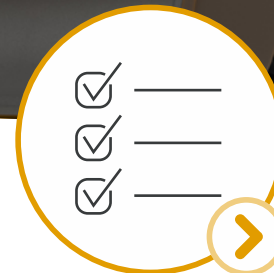
COVERAGE



SOFTWARE



HARDWARE



SERVICES



COJALI

JALTEST. INDUSTRY-LEADING DIAGNOSTICS & TECHNICAL SOLUTIONS.





JALTEST DIAGNOSTICS

Jaltest OHW is a multi-brand and multi-system diagnostics tool developed to perform the most advanced diagnostics and maintenance tasks in OHW equipment in an easy and intuitive way.

Jaltest Diagnostics is not limited to reading fault codes of OHW equipment systems, but it also features bi-directional control and guided troubleshooting.

FIND OUT AN EXPERIENCE
BEYOND DIAGNOSTICS WITH
JALTEST.

JALTEST
DIAGNOSTICS

TECHNICAL
SUPPORT

JALTEST
UNIVERSITY

SPECIALISED
CUSTOMER
SERVICE





COVERAGE



CV
COMMERCIAL



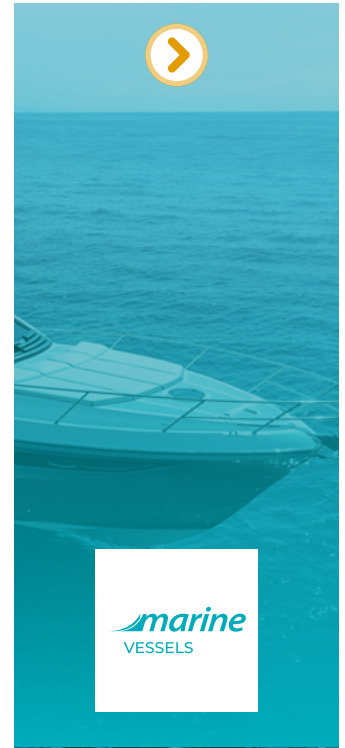
AGV
AGRICULTURAL



OHW
OFF-HIGHWAY



MHE
MATERIAL
HANDLING



marine
VESSELS





COVERAGE



jaltest
OHW

OHW EQUIPMENT

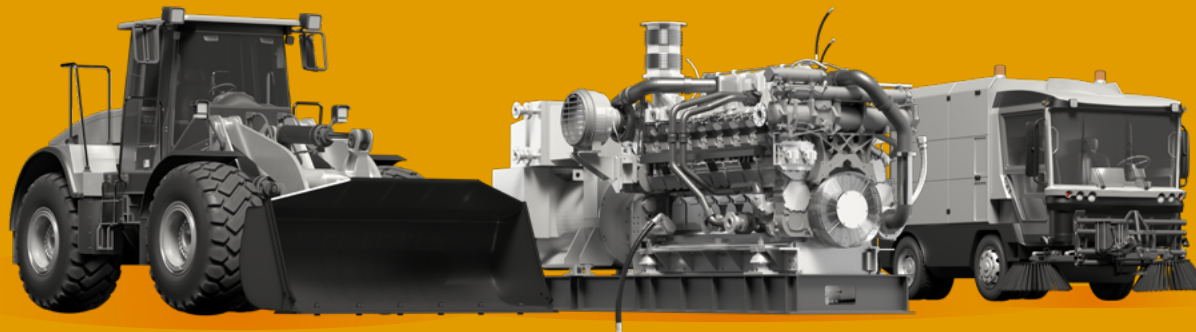
Just like the rest of Jaltest Diagnostics modules, it offers a wide coverage of brands, models and systems, as well as a large variety of cables to carry out direct connections. Jaltest OHW includes complete technical information and troubleshooting guides, which make it the benchmark diagnostics tool of the sector.

Jaltest OHW includes advanced functions such as:

1. Calibrations
2. Parameter modification
3. System checks
4. Component actuation
5. And much more...



THE JALTEST OHW KIT HAS BEEN DEVELOPED TO PERFORM MAINTENANCE AND DIAGNOSTICS TASKS IN OFF-HIGHWAY EQUIPMENT, SUCH AS CRANES, EXCAVATORS, DUMPERS, AS WELL AS IN STATIONARY ENGINES, CLEANING MACHINES OR ROAD MAINTENANCE EQUIPMENT, AMONG OTHERS.





COVERAGE



jaltest
cv

Diagnostics equipment aimed for workshops where repair and/or maintenance services are performed in several types of commercial vehicles, such as: trucks, buses, trailers, LCVs, pick-up trucks.

Jaltest CV allows diagnostics in all commercial vehicles. Jaltest CV coverage includes truck, bus, light commercial vehicle, pick-up trucks, trailer and semi-trailer.

Jaltest CV includes advanced functions such as:

1. Calibrations
2. Parameter modification
3. System checks
4. Component actuation
5. And much more...





COVERAGE



jaltest
AGV

Jaltest AGV is the Jaltest Diagnostics kit focused on the diagnostics and maintenance of all type of agricultural equipment. Therefore, it is ideal for workshops that repair tractors, harvesters, forage harvesters or grape harvesters among others.

It covers a wide variety of brands, models and systems, and it offers a large catalogue of cables to carry out direct connections.

Just like the rest of licences, Jaltest AGV offers the best technical information of the sector and will help in the whole repair process through easy and intuitive guides.

Jaltest AGV includes advanced functions such as:

1. Calibrations
2. Parameter modification
3. System checks
4. Component actuation
5. And much more...





COVERAGE



jaltest MHE

Jaltest MHE (Material Handling Equipment) is the pioneering repair kit in the repair sector of material handling equipment due its multiple advantages and possibilities when it comes to performing diagnostics and maintenance efficiently in forklifts, telescopic handlers, lift platforms and derivatives.

It offers complete coverage, including new brands, models and systems three times a year, which guarantees a constant update of its capabilities.

Just as the rest of the kits, Jaltest MHE offers technical information, troubleshooting guides and many other useful resources for technicians during the repair of this type of equipment.

Jaltest MHE includes advanced functions such as:

1. Calibrations
2. Parameter modification
3. System checks
4. Component actuation
5. And much more...





COVERAGE



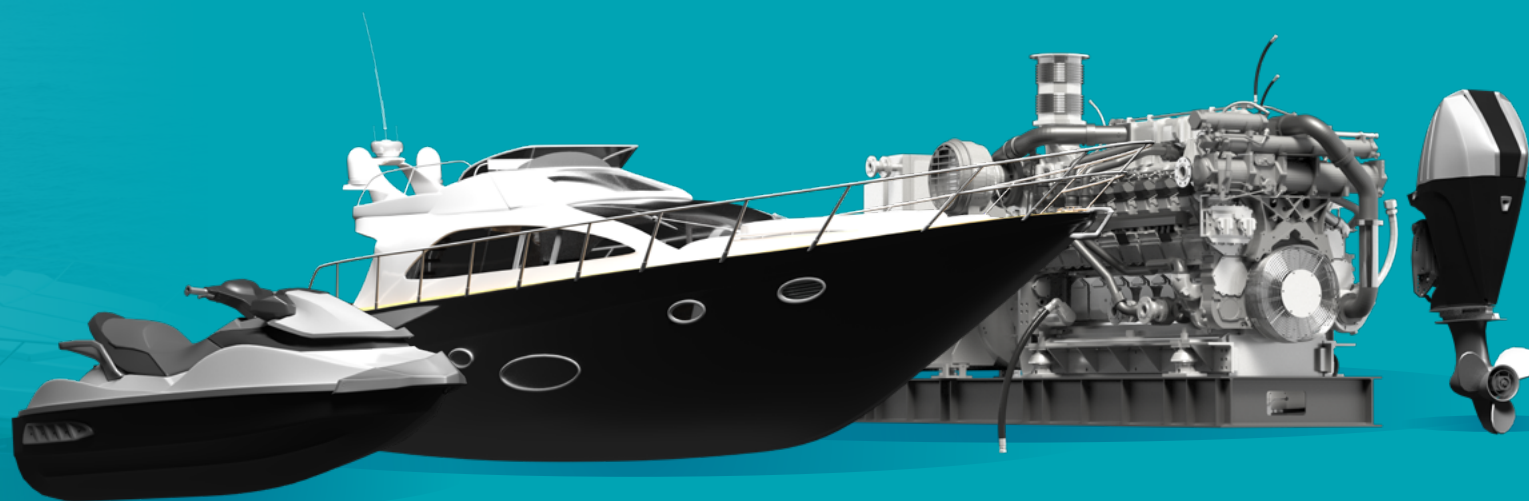
Jaltest Marine is our kit intended for vessels and the marine sector. The wide expertise of Jaltest Diagnostics in land vehicles has allowed us to successfully pursue the design of a complete maintenance and diagnostics tool for vessels, jet skis, outboard and inboard engines and stationary engines.

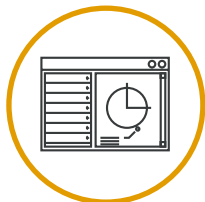
With a wide coverage of models, brands and systems, Jaltest Marine is totally orientated toward those technicians that provide nautical repair services. We have collected the best technical information for them and we have developed step-

by-step troubleshooting guides, turning Jaltest Marine into a cutting-edge tool in the sector.

Jaltest Marine includes advanced functions such as:

1. Calibrations
2. Parameter modification
3. System checks
4. Component actuation
5. And much more...





SOFTWARE

JALTEST DIAGNOSTICS SOFTWARE



FIND WHAT YOU
WERE LOOKING
FOR



ADDITIONAL MODULES



DIAGNOSTICS MENU

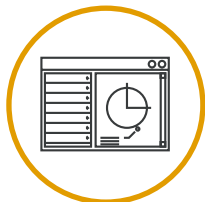


TECHNICAL INFORMATION



JALTEST IN NUMBERS





SOFTWARE

Jaltest Diagnostics software surprises for its:

1. Easy handling
2. Most advanced diagnostics functions
3. Component technical data
4. Wiring diagrams
5. Maintenance data
6. Equipment technical data
7. Troubleshooting guides
8. Releases and technical procedures
9. Additional modules

**JALTEST DIAGNOSTICS
PROVIDES TECHNICIANS
WITH INCOMPARABLE
ADDITIONAL HELP.**



**GRAPHICAL USER
INTERFACE**

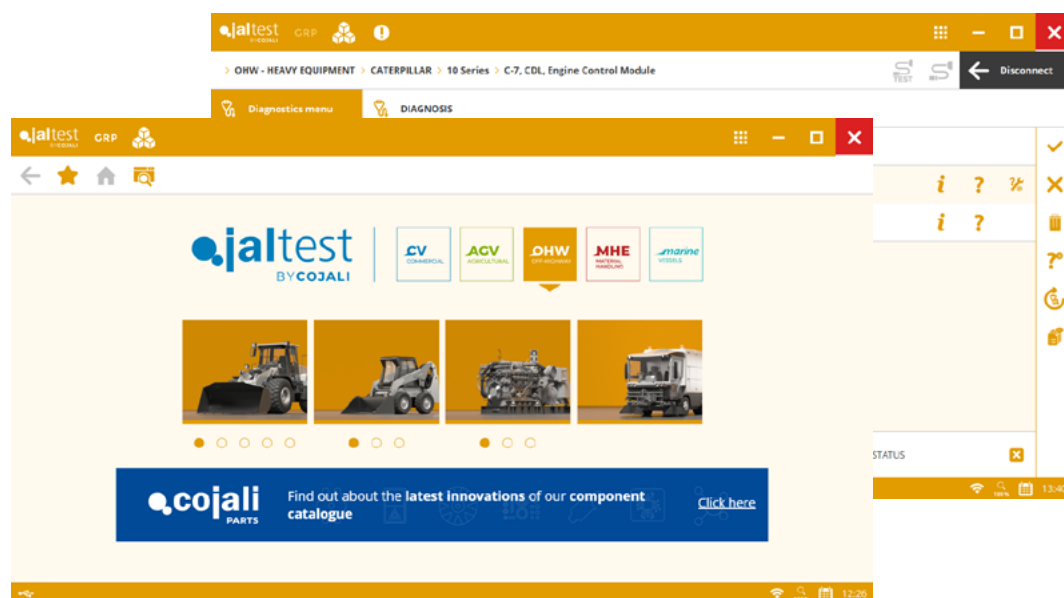




SOFTWARE



GRAPHICAL USER INTERFACE



**FAST INSTALLATION
AND HANDLING**

CUSTOMISABLE

**EVERYTHING IN ONE
SINGLE DISPLAY**

**USER-FRIENDLY,
VISUAL, INTUITIVE.**





SOFTWARE



FIND WHAT YOU WERE LOOKING FOR

This are some of the features that make Jaltest the Industry's Leading Diagnostics tool.



ADDITIONAL MODULES

1. GRP (Garage Resource Planning). Management of workshop and client/vehicle reports.
2. Additional modules.



DIAGNOSTICS MENU

3. Diagnostics menu.



TECHNICAL INFORMATION

4. System technical data.
5. Wiring diagrams, and fuses and relay boxes.
6. Vehicle service data.
7. Vehicle technical data.
8. Troubleshooting guides by symptoms.
9. Technical releases.
10. Troubleshooting guides by fault codes.



JALTEST IN NUMBERS

The screenshot displays the Jaltest software interface. At the top, the navigation bar shows the path: OHW - HEAVY EQUIPMENT > CATERPILLAR > 10 Series > C-7, CDI, Engine Control Module. The left sidebar contains the Diagnostics menu with numbered items 3 through 9. The main area shows the 'DIAGNOSIS' section with 'FAULT CODE(S) STORED IN MEMORY: 2'. Two fault codes are listed: PID:110 x1 Coolant temperature sensor and PID:21 x1 Engine Position Sensor. A legend at the bottom indicates the status of fault codes: ACTIVE FAULT CODE (red X), INACTIVE FAULT CODE (grey X), and OTHER FAULT CODE STATUS (yellow !).

FAULT CODE(S) STORED IN MEMORY: 2	STATUS
PID:110 x1 Coolant temperature sensor.	ACTIVE FAULT CODE
PID:21 x1 Engine Position Sensor.	ACTIVE FAULT CODE



SOFTWARE



**ADDITIONAL
MODULES**



**PASS
THRU**



Jaltest
GRP



Jaltest
**DATA
LINK**





SOFTWARE



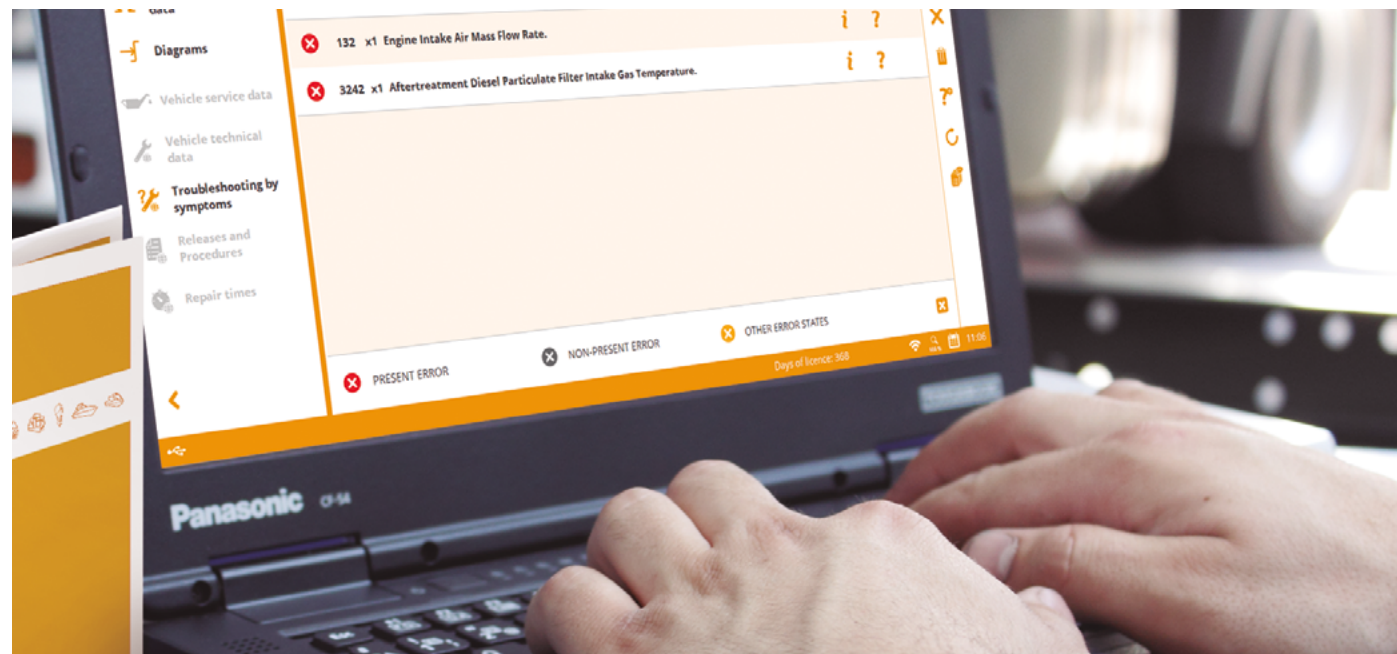
ADDITIONAL MODULES

PASS-THRU

Jaltest has the additional Pass-Thru module, which enables communication through the SAE J2534 protocol with the manufacturer's software to perform:

1. Control unit updates
2. Calibrations
3. Unit reprogramming
4. OHW equipment analysis

This makes it possible to reduce dependence with proprietary hardware, decreasing costs and increasing the productivity.





SOFTWARE



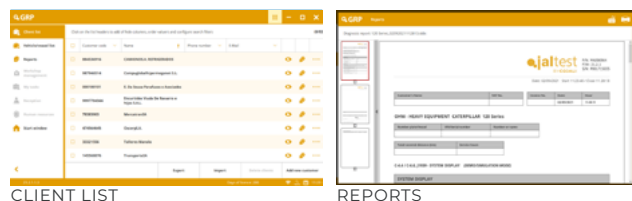
ADDITIONAL MODULES

Jaltest GRP

GRP (Garage Resource Planning) is the workshop management program that allows you to organise and manage its activity. GRP is included in Jaltest.

GRP BASIC

It allows you to store and manage clients, OHW equipment and reports in a simple and easy way.

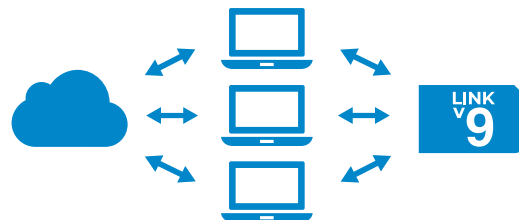


CLIENT LIST

REPORTS

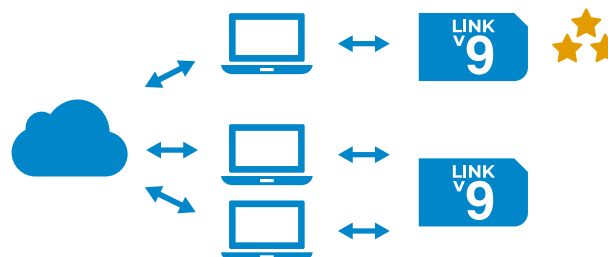
GRP SYNCHRO

Upgrade by storing all your clients, special equipment and reports in the cloud. Synchronise automatically all stored data in all your devices.



GRP ENTERPRISE

Manage one or more workshops completely. Synchronise all stored data, even if it is located in different workshops! Access all Jaltest GRP functionalities.



GRP NETWORK

It manages the workshop network by choosing which and where data must be shared, therefore obtaining greater privacy.



JALTEST GRP FUNCTIONALITIES

CLIENT LIST MANAGEMENT

VEHICLE LIST MANAGEMENT

REPORT MANAGEMENT

- Diagnostics reports
- Maintenance reports

WORKSHOP MANAGEMENT

- Work orders
- Tasks
- Workshop time reports

WORKSHOP RECEPTION MANAGEMENT

- Reception forms
- Work orders management

HUMAN RESOURCES MANAGEMENT

ANALYTIC DATA OF YOUR FLEET OR NETWORK

- Tool use
- Equipment more frequently diagnosed
- More frequent fault codes



SOFTWARE



ADDITIONAL MODULES

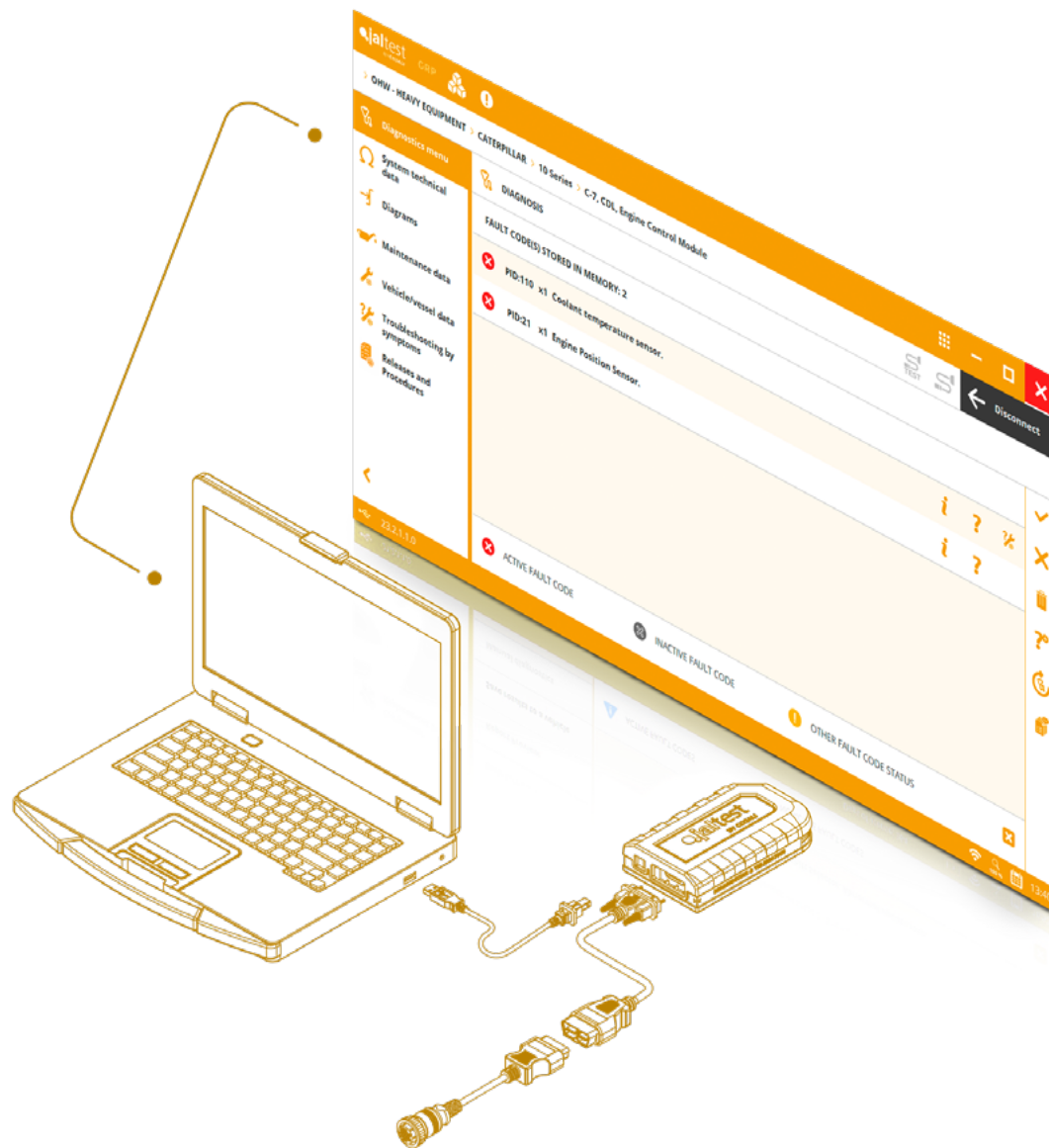
jaltest DATA-LINK

Jaltest DATA-LINK is a device that allows the user to use Jaltest hardware with the software of different manufacturers and without using the original hardware.

Jaltest DATA-LINK supports all generic communication protocols RP1210, SAE J1939, SAE J2534 and OBD.

This solution also includes a software for the diagnostics of generic faults.

Therefore, all solutions can be grouped in one single device.





SOFTWARE



DIAGNOSTICS MENU

1. SYSTEM DISPLAY

Real-time live data display of OHW equipment diagrams, enabling fast assessment of the system performance.

2. DATA RECORDER

This function allows the user to make tests while the OHW equipment is moving and, at the same time, the record of measurements and fault codes. This way, it is possible to know the exact moment at which a fault code occurred.

3. VIRTUAL INSTRUMENTS/GRAPHS

Visual aid for the technician to check values and understand the current status of any system available in the OHW equipment.



4. SYSTEM SCAN

This function allows the user to scan the available systems in the selected model. During the system scan, fault code reading of every available system takes place, including their identification data. Later, every fault code found can be cleared.

5. VEHICLE VIN DETECTION

It allows the detection of the VIN or chassis number of OHW equipment with just one click.

6. SHORTCUT TO SPECIAL FUNCTIONS

Optimize repair times at the shop with direct access to relevant repair processes.

AND MUCH MORE!



SOFTWARE

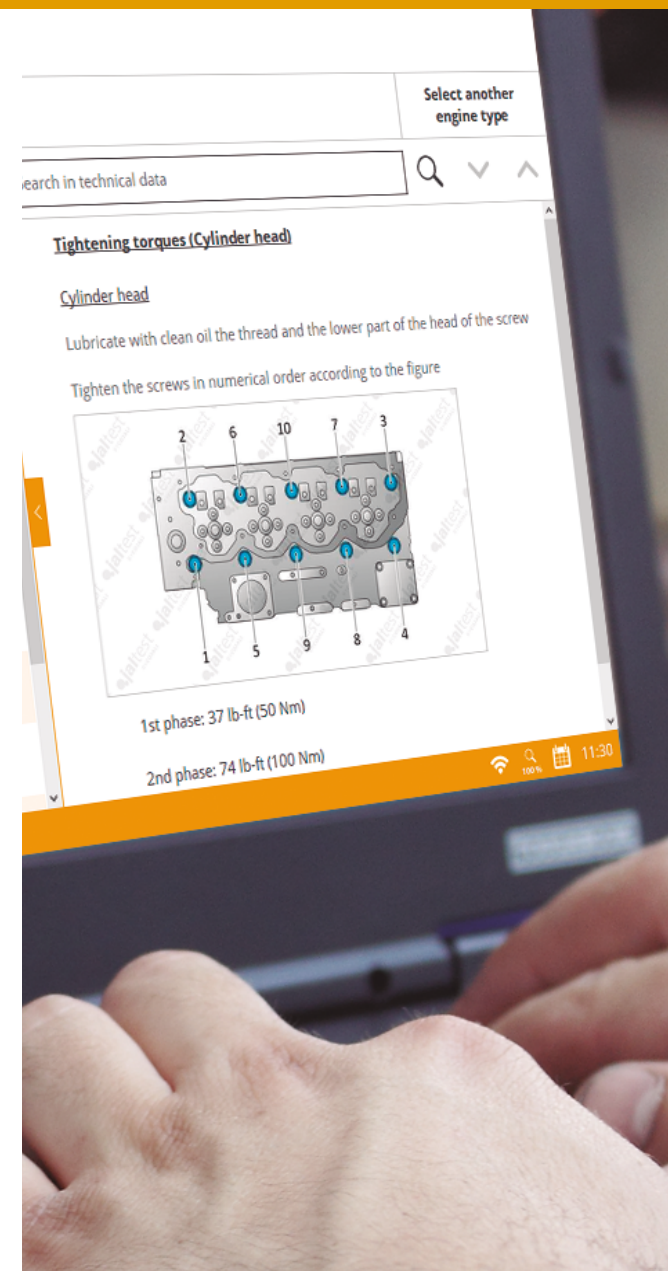


TECHNICAL INFO

The technical information of Jaltest includes:

1. **System technical data:** Specifications of the operation ranges of sensorised components, as well as their location and pinout.
2. **Wiring, system and fuse diagrams:** Simple, interactive and easy-to-navigate diagrams for the different system configurations.
3. **Equipment maintenance data:** A complete data base with all the information needed to perform the proper maintenance of the selected OHW equipment.
4. **Equipment technical data:** Specific OEM standards for the most common equipment adjustments (adjustment torques, reference measurements, parameters, diagrams, repair times, etc.).

5. **Troubleshooting guides by symptoms:** Step-by-step guides that allow the diagnostics of equipment by the symptoms.
6. **Technical releases:** Bulletin on technical service, launches and procedures with updated information, published by the OEMs, about any modification of the service and procedures, reviewed parts, etc.
7. **Troubleshooting guides by fault codes:** Intuitive and easy-to-follow troubleshooting guides, for both mechanical and electronical problems, linking directly to the actions to be carried out.



JALTEST HAS THE BENCHMARK
DATA BASE OF TECHNICAL
INFORMATION IN THE MARKET.



SOFTWARE



JALTEST IN
NUMBERS

BRANDS

213

MODELS

4539

SYSTEMS

15561

TECHNICAL INFO

9503

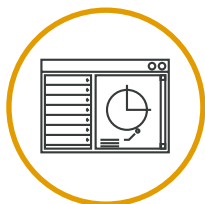
DIAGRAMS

4879



THREE ANNUAL UPDATES INCLUDED IN THE SOFTWARE





HARDWARE



**JALTEST DIAGNOSTICS
HARDWARE KIT**



LINK V9



**SUPPLEMENTS AND
ACCESSORIES**





HARDWARE



LINK V9



LIGHT, FAST,
EXCEPTIONAL.

MAXIMUM CONNECTION SPEED

It performs diagnostics in every control unit of the OHW equipment at a hitherto previously unknown speed.

PROTECTED USB AND SUBD26 CONNECTORS THANK TO THE POKA YOKE DESIGN

HIGH-PERFORMANCE, RUGGED AND RELIABLE ELECTRONICS

Greater connectivity, new supported communication protocols and extended multiplexor.

IMPACT ABSORPTION

Design with a rugged covering that cushions small bumps, protects against scratches and enables the seal closure of the device, preventing the inlet of dirt and water (IP40).

COMPACT AND LIGHT





HARDWARE



JALTEST HARDWARE KIT

All Jaltest products have been designed to meet the demands and needs of the workshop mechanics and the most demanding road assistance needs. They are designed and built to face any extreme work or weather conditions.

Jaltest Diagnostics Hardware Kit can be configured according to the workshop needs. There is a wide variety of connectors depending on the types of brands and models of OHW equipment.



JALTEST DIAGNOSTICS HARDWARE KIT
ALLOWS CONNECTION TO ALL THE TYPES OF
OHV EQUIPMENT AVAILABLE WITHIN JALTEST
COVERAGE.





HARDWARE



SUPPLEMENTS AND ACCESSORIES

JALTEST OFFERS A WIDE VARIETY OF ACCESSORIES AND SUPPLEMENTS THAT LEADS TO UNPARALLELED DIAGNOSTICS OF OHW EQUIPMENT.

JALTEST RUGGED PC

Jaltest Rugged PC is optimised for the use of Jaltest in the most demanding conditions.

- Windows 11 Pro
- Rugged and exclusive design
- Liquid-resistant keyboard/touchpad
- Keyboard available in several languages
- User-replaceable battery



JALTEST RUGGED PAD

Jaltest Rugged Pad is a high-performance tablet that enables a more versatile use of Jaltest.

- Windows 11 Pro
- 10" Screen
- User-replaceable battery
- Digitiser pen
- Rugged and exclusive design



WORKSTATION

The Jaltest workstation is the best way of transporting Jaltest. It is specially designed to perform diagnostics in all OHW equipment with maximum comfort.





SERVICES



JALTEST UNIVERSITY



TECHNICAL SUPPORT





SERVICES



JALTEST UNIVERSITY

Our Jaltest University division gathers the entire Jaltest training offer, from courses traditionally taught on-site to online courses or webinars. This way, we have adapted to the new needs for universal and quality training at the disposal of any professional in the sector.



Jaltest University is aimed at:

- Workshops
- Manufacturers
- Distributors
- Students
- Other professionals of the sector

Jaltest University includes the following topics, among others:

- Diagnostics
- Engine management
- Anti-pollution system
- Pneumatics
- Electricity and communication protocols



E-LEARNING COURSES

"Jaltest University offers training available to everyone, anytime and anywhere through Jaltest e-learning.

It is an online training platform that allows technicians to learn about topics related to commercial vehicles, agricultural equipment and OHW equipment."

CUSTOMISED TRAINING

In Jaltest University, we also offer customised courses for our official distributors, that can be taught directly at their facilities.

The commercial courses are intended for the commercial training of our distributors' staff and the training courses for workshops are addressed to professionals of client workshops of our official distributors, being totally adapted to their needs.



SERVICES



CUSTOMER SERVICE AND PRODUCT SUPPORT

Jaltest provides worldwide Product Support.

Jaltest Product Support covers all the consultations related to the operation of Jaltest diagnostics device prior to the connection with the equipment.

1. Doubts during the software installation process.
2. Support in the connection with the equipment.
3. Information on the device coverage.
4. Information on the fault codes related to the connection of the equipment.
5. Expert Mode code generation.

2497

Connected workshops
(SP & PT)

456408

Total solved incidences

AVAILABLE LANGUAGES:

- | | | |
|-----------|--------------|------------|
| - SPANISH | - GERMAN | - TURKISH |
| - ENGLISH | - FRENCH | - ROMANIAN |
| - ITALIAN | - RUSSIAN | - HINDI |
| | - PORTUGUESE | |

CUSTOMER SERVICE

A human team will be at your service to offer all the information about Jaltest you may need.

1. Software Update and Innovations.
2. Update release calendar information.
3. Device license management.
4. New products, hardware and software.
5. Special offers and promotions.
6. Invoices and purchase orders.
7. Shipping management.

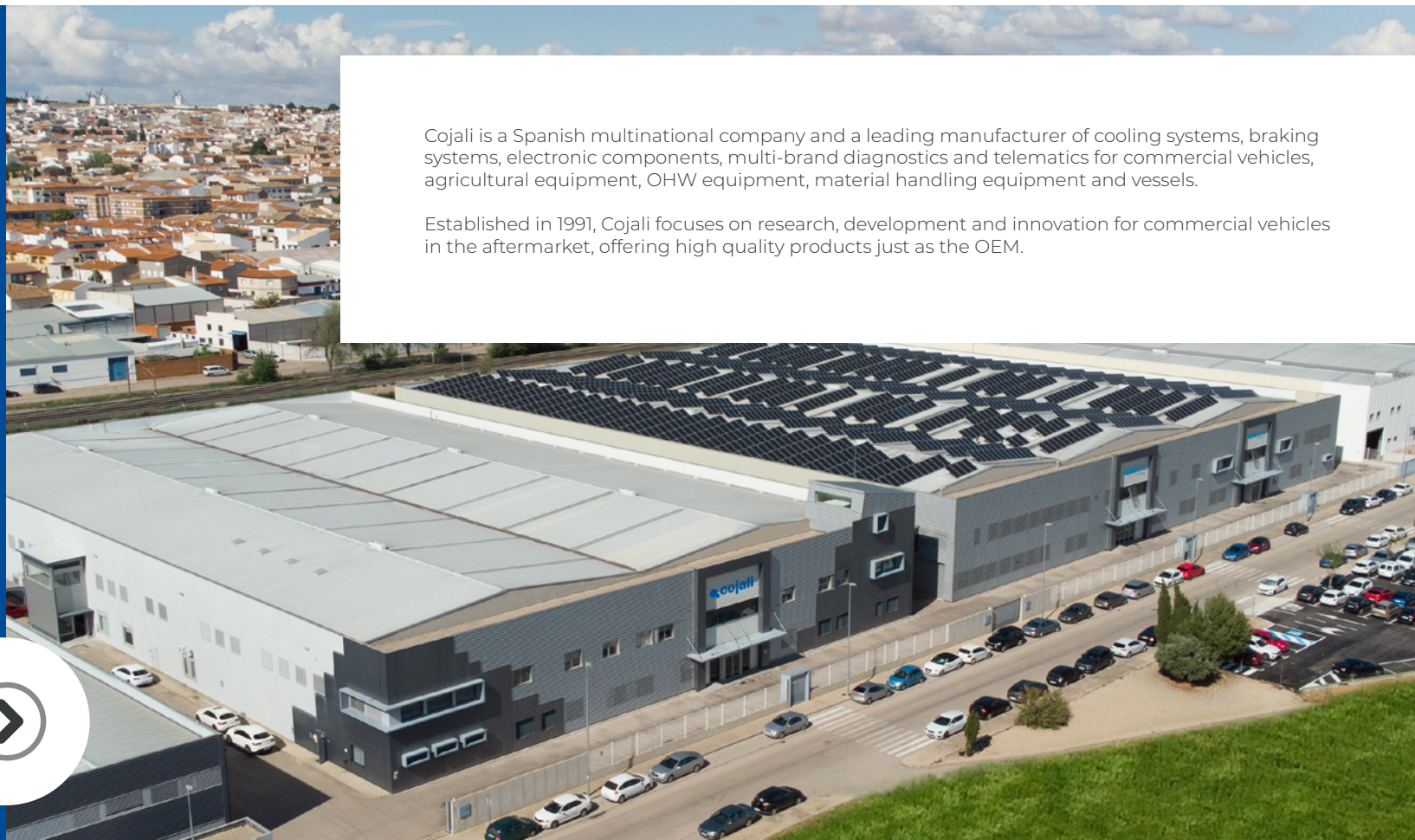


« **cojali**

518
WORKERS

135
COUNTRIES

COJALI.
INTERNATIONAL
PRESENCE



Cojali is a Spanish multinational company and a leading manufacturer of cooling systems, braking systems, electronic components, multi-brand diagnostics and telematics for commercial vehicles, agricultural equipment, OHW equipment, material handling equipment and vessels.

Established in 1991, Cojali focuses on research, development and innovation for commercial vehicles in the aftermarket, offering high quality products just as the OEM.

HEAD OFFICE



SPAIN

BRANCHES



FRANCE



ITALY



USA

SALES OFFICES



GERMANY

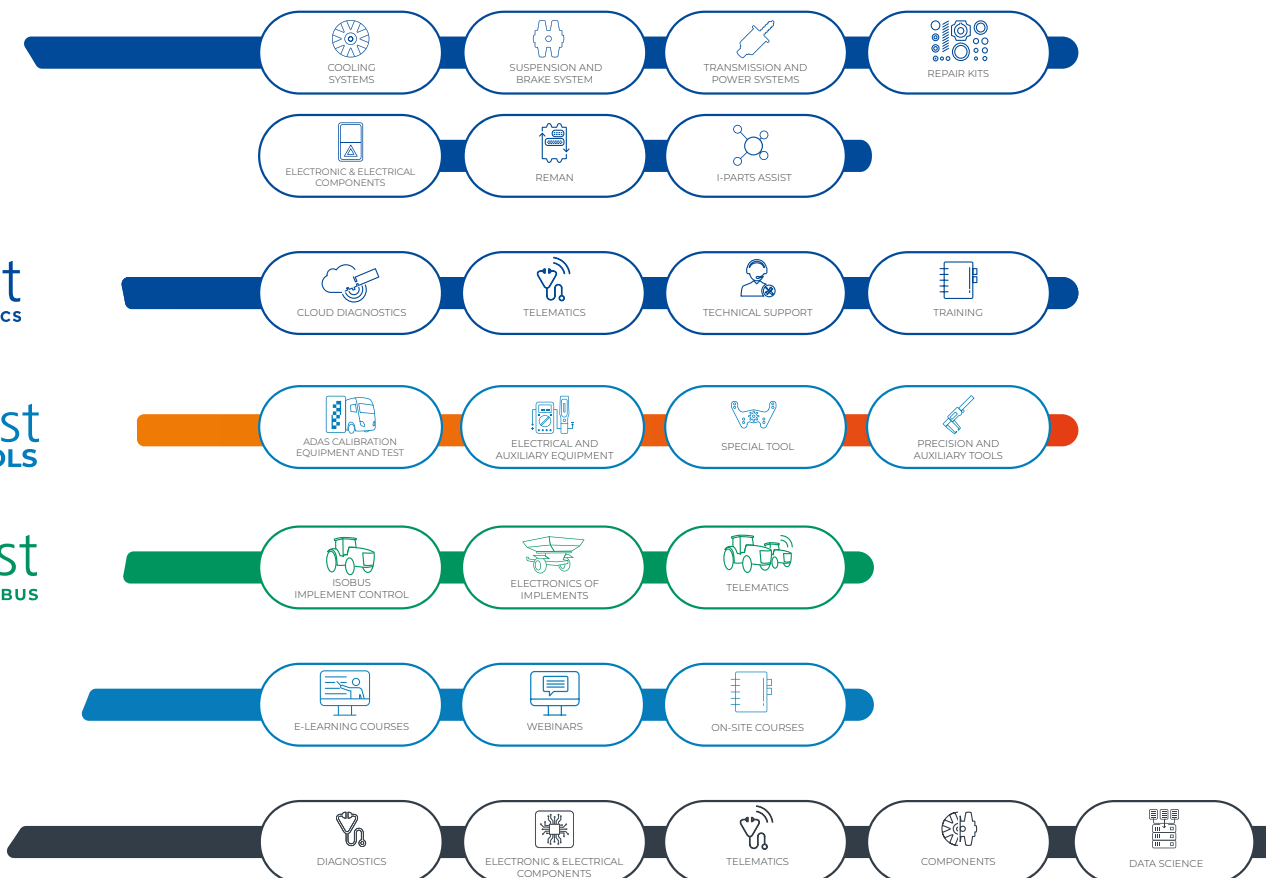
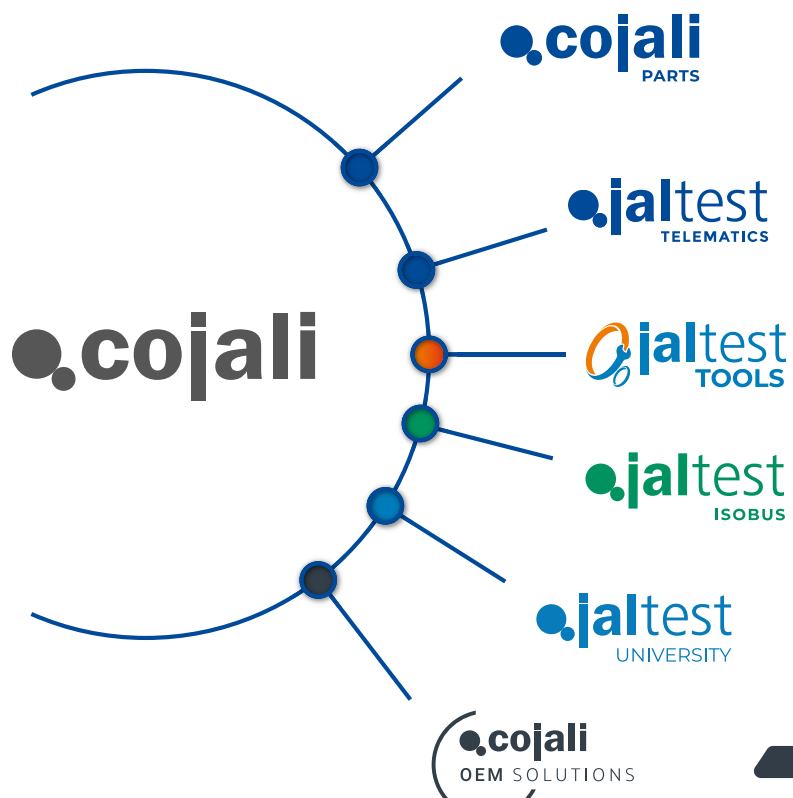


MEXICO



TURKEY







cojali.com

jaltest.com



2023 V1 EN

HEAD OFFICE

NATIONAL

atencionalcliente@cojali.com >

Tel.: +34 926 58 96 70 >

INTERNATIONAL

customerservice@jaltest.com >

CLICK HERE TO CONTACT US